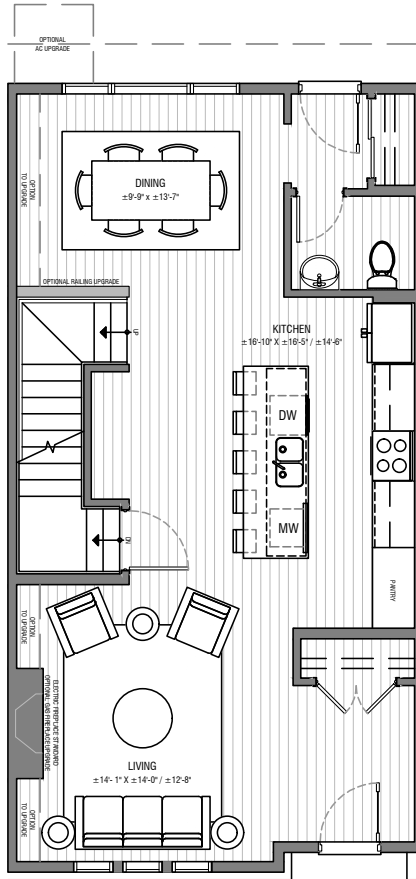


Floorplan - E

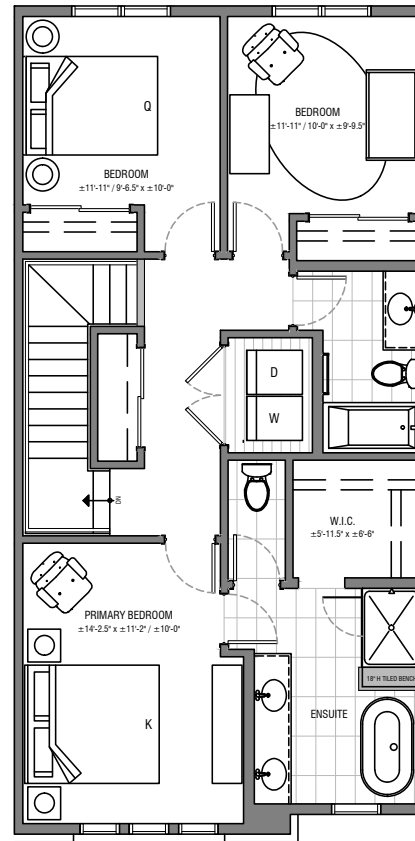
4 BEDROOM, 3.5 BATH
DEVELOPED LOWER LEVEL
Corner Home ±1,635 SQFT

Main



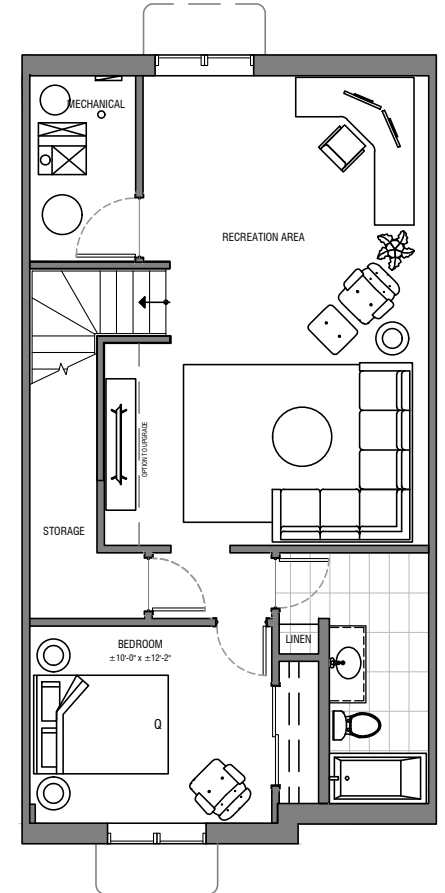
Interior ±762 SQFT*

Upper



Interior ±873 SQFT**

Lower - Developed



Interior ±762 SQFT*

*Includes stairs **Units with raised ceilings in master bedroom #962, #1058

The developer reserves the right to make modifications and changes to building design, specifications, features and floor plans if necessary to maintain the high standards of this development. Square footage and room dimensions are based on architectural drawings and measurements. Furniture layouts depict standard furnishing sizes and are intended for reference only. Floor plan may be reversed depending on location. All sizes are approximate and actual area and room dimensions may vary from preliminary and final survey. Artist rendering only. Subject to change without notice. E.&OE.