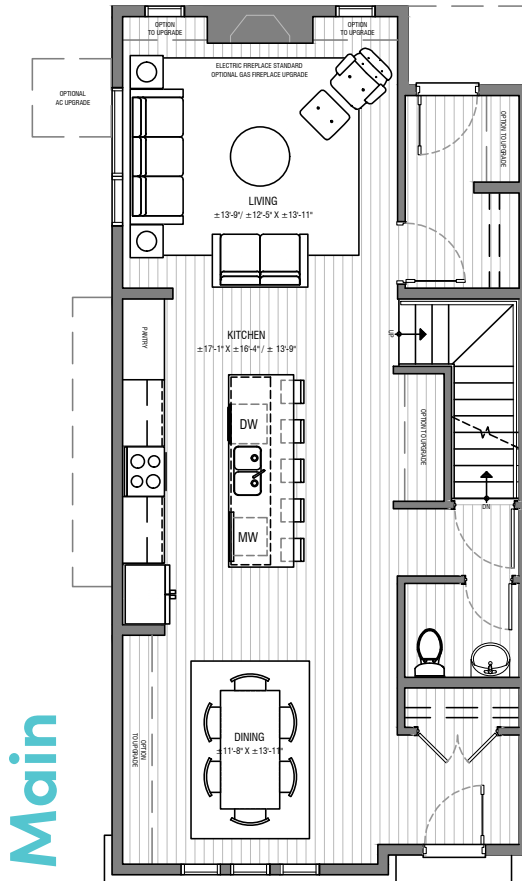
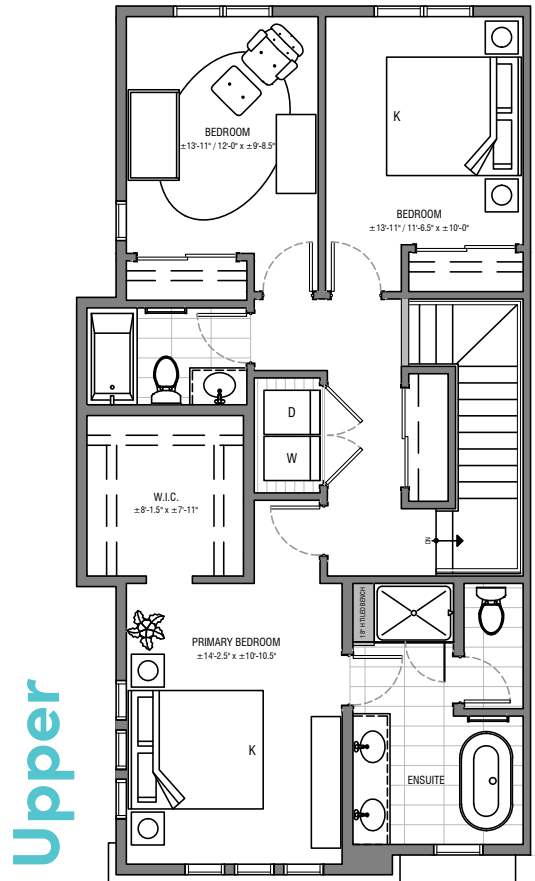


Floorplan - D

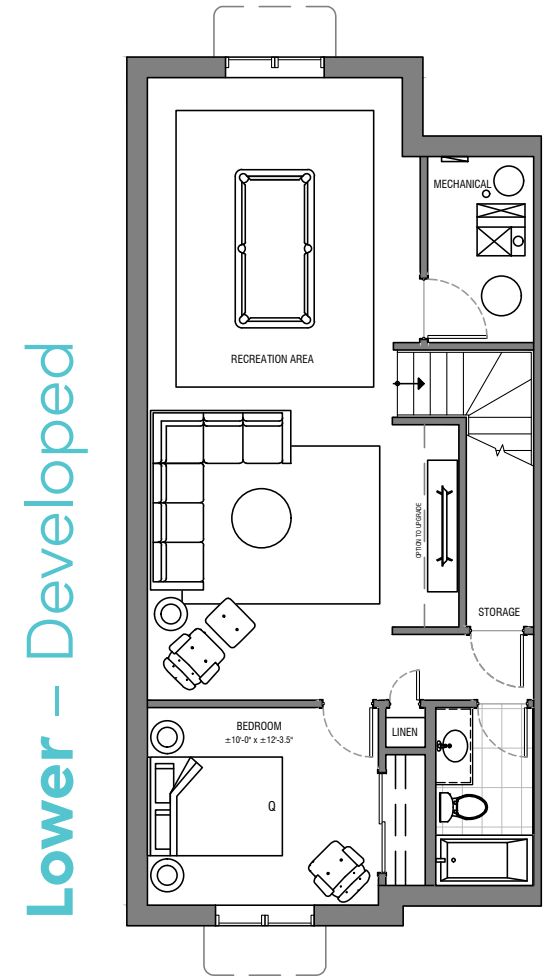
4 BEDROOM, 3.5 BATH
DEVELOPED LOWER LEVEL
Corner Home ±1,785 SQFT



Interior ±841 SQFT*



Interior ±944 SQFT**



Interior ±822 SQFT*

*Includes stairs **Units with raised ceilings in master bedroom #962, #1058