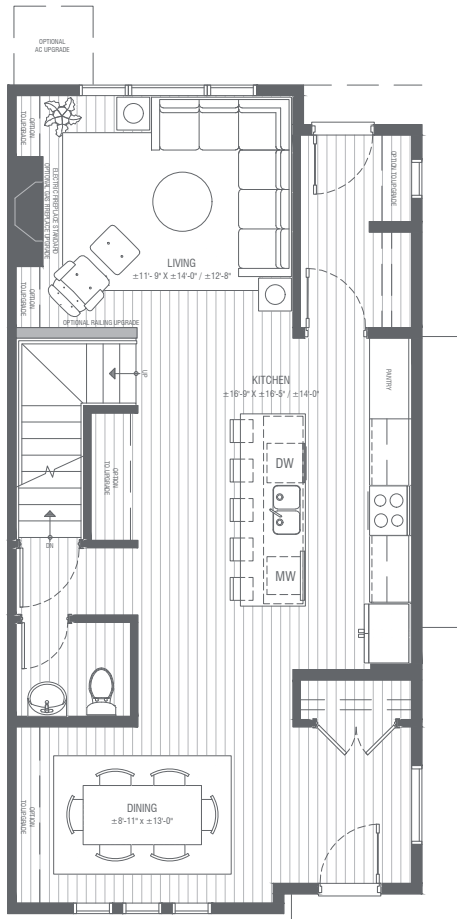


Floorplan - B

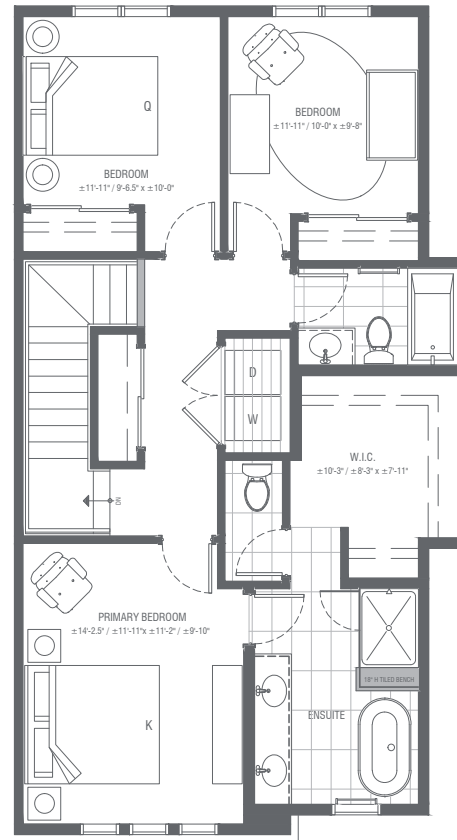
4 BEDROOM, 3.5 BATH
DEVELOPED LOWER LEVEL
Corner Home ±1,712 SQFT

Main



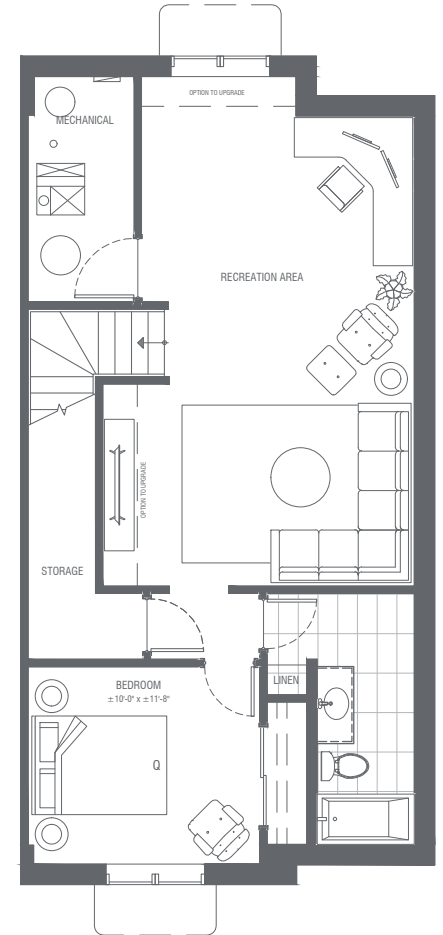
Interior ±810 SQFT*

Upper



Interior ±902 SQFT**

Lower - Developed



Interior ±781 SQFT*

*Includes stairs **Units with raised ceilings in master bedroom #926, # 978, #982, #1018, #1034, #1074, #1078