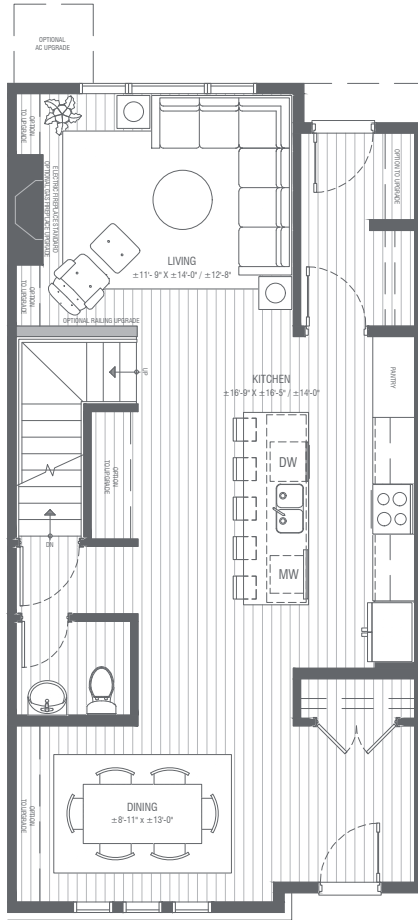


Floorplan - A

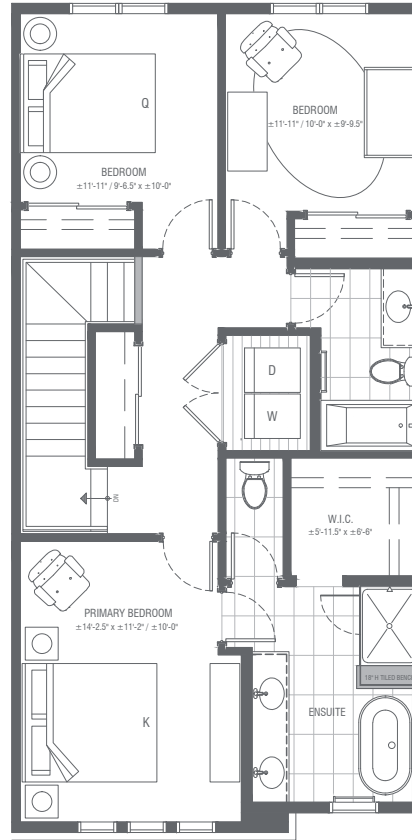
4 BEDROOM, 3.5 BATH
DEVELOPED LOWER LEVEL
Interior Home ±1,684 SQFT

Main



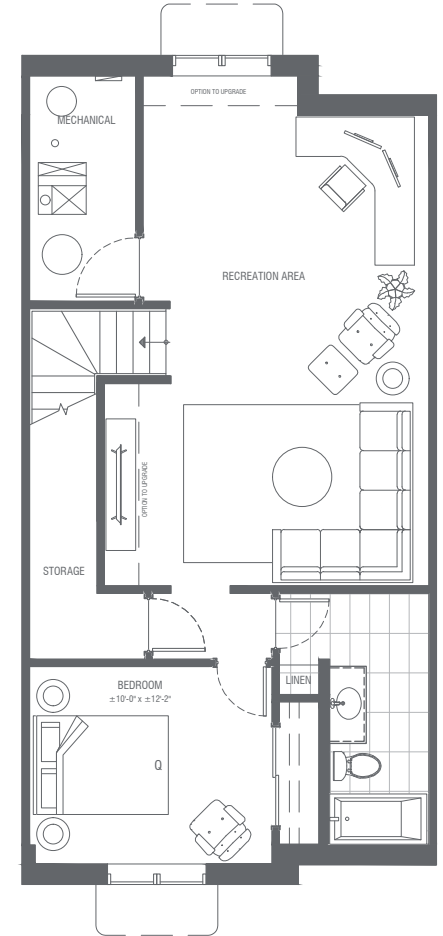
Interior ±811 SQFT*

Upper



Interior ±873 SQFT**

Lower - Developed



Interior ±781 SQFT*

*Includes stairs **Units with raised ceilings in master bedroom #918, #970, #1066