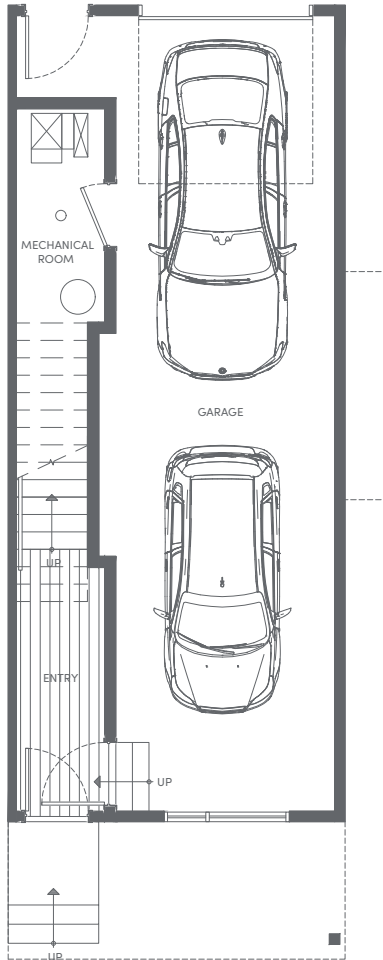


Boulevard 16 ±1,361 SQFT

Features

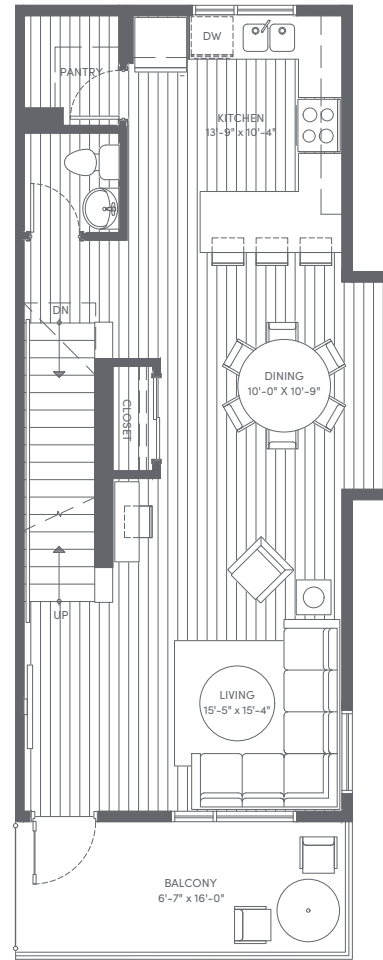
- 3 bedrooms, 2.5 bathrooms
- Oversized master with walk-in closet
- Upper level laundry room
- Open concept design on main level
- Large kitchen with flush counter breakfast bar and pantry
- Private front covered entry with patio
- 2 car tandem garage

±65 SQFT



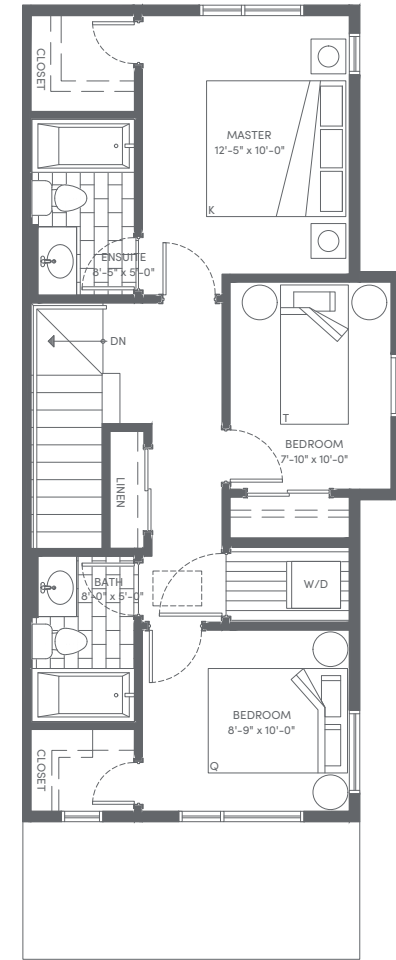
Lower

±648 SQFT



Main

±648 SQFT



Upper