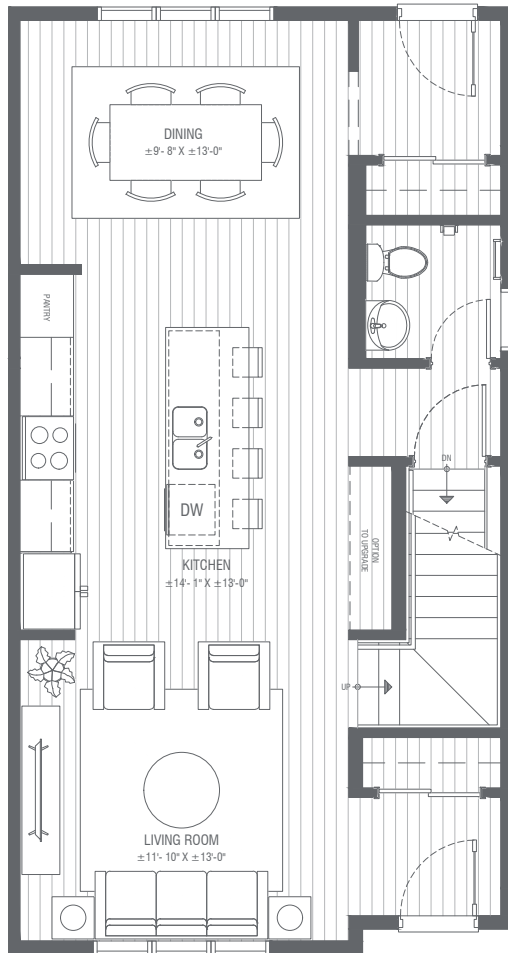


# Floorplan - B.2

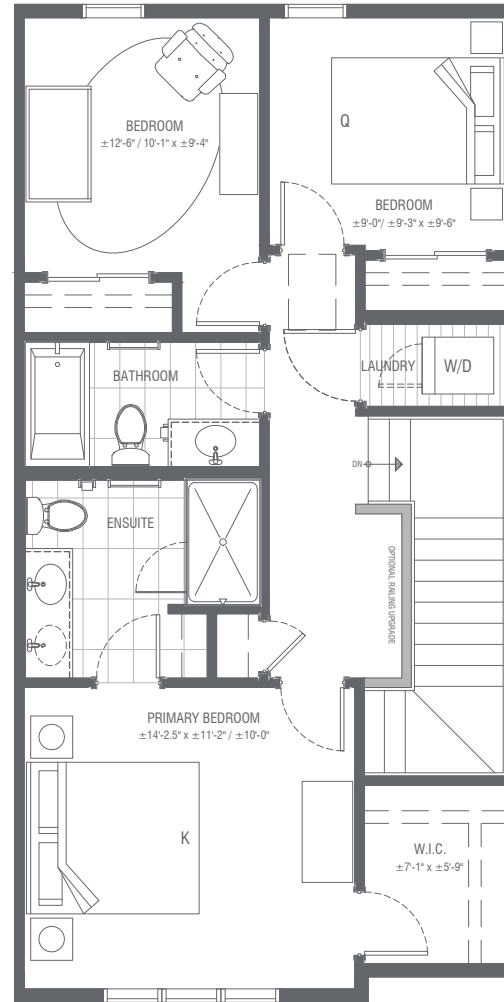
3 - 4 BEDROOM, 2.5 - 3.5 BATH  
DEVELOPED/UNDEVELOPED LOWER LEVEL  
Corner Home ±1,471 SQFT

Main - Central Kitchen



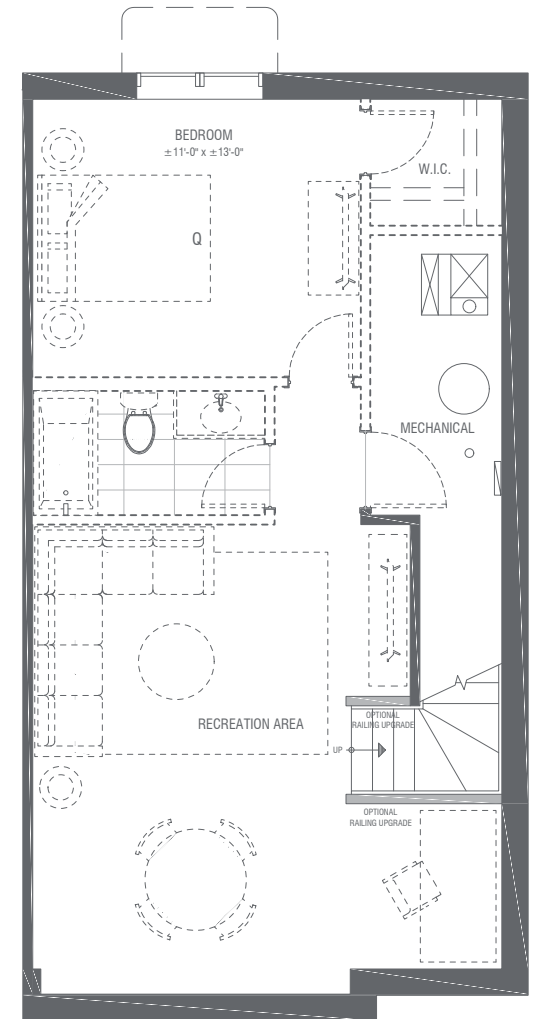
Interior ±689 SQFT

Upper - 3 Bedroom



Interior ±782 SQFT

Lower - Undeveloped

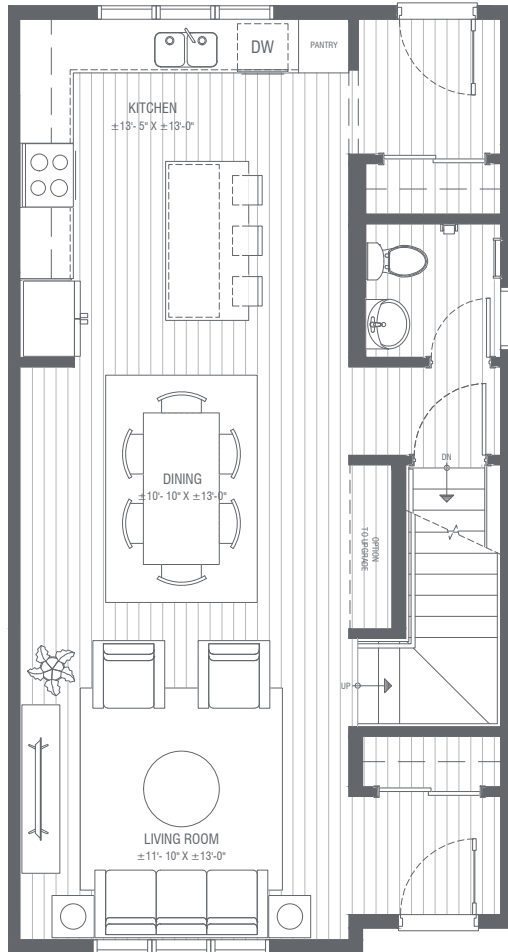


Interior ±0 SQFT

# Options Floorplan - B.2

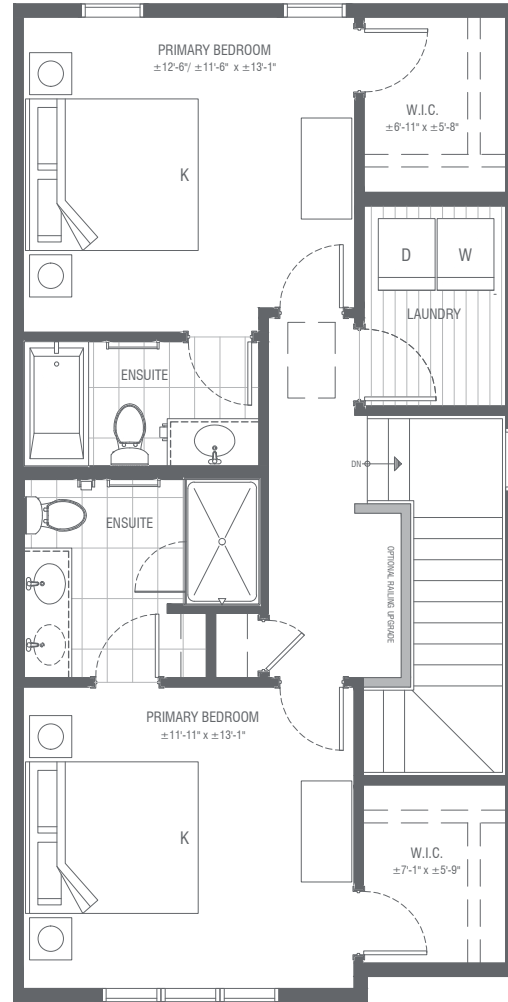
2 - 3 BEDROOM, 2.5 - 3.5 BATH  
DEVELOPED/UNDEVELOPED LOWER LEVEL  
Corner Home ±1,471 SQFT

Main - Rear Kitchen



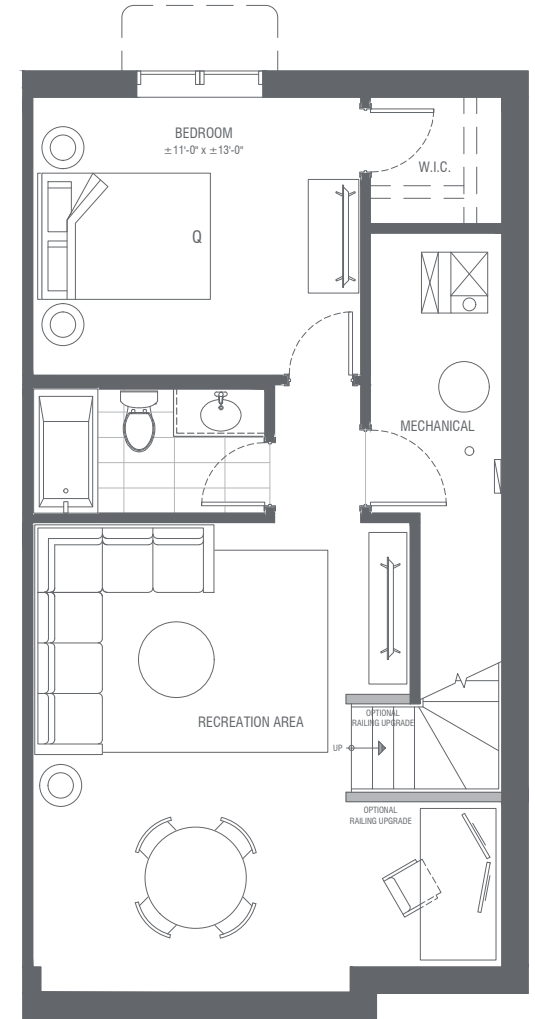
Interior ±689 SQFT

Upper - 2 Bedroom



Interior ±782 SQFT

Lower - Developed



Interior ±672 SQFT