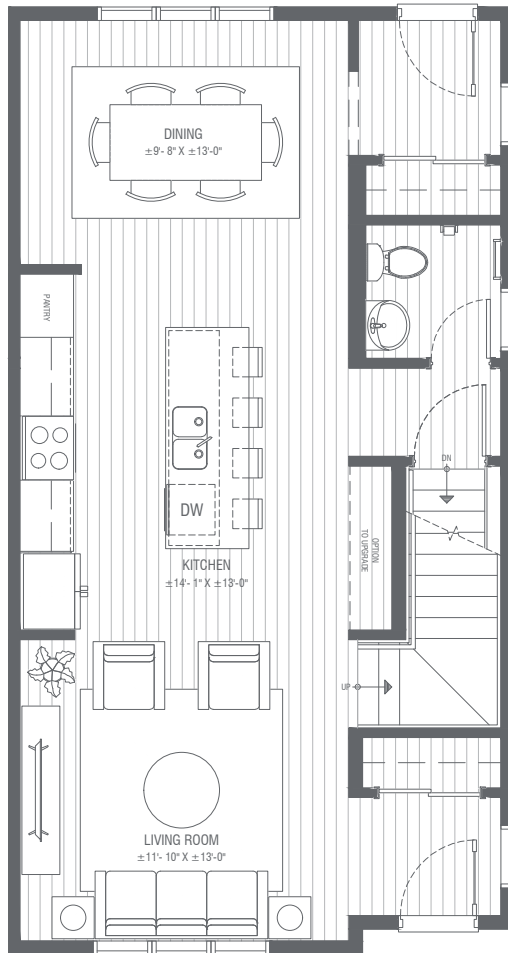


# Floorplan - B.1

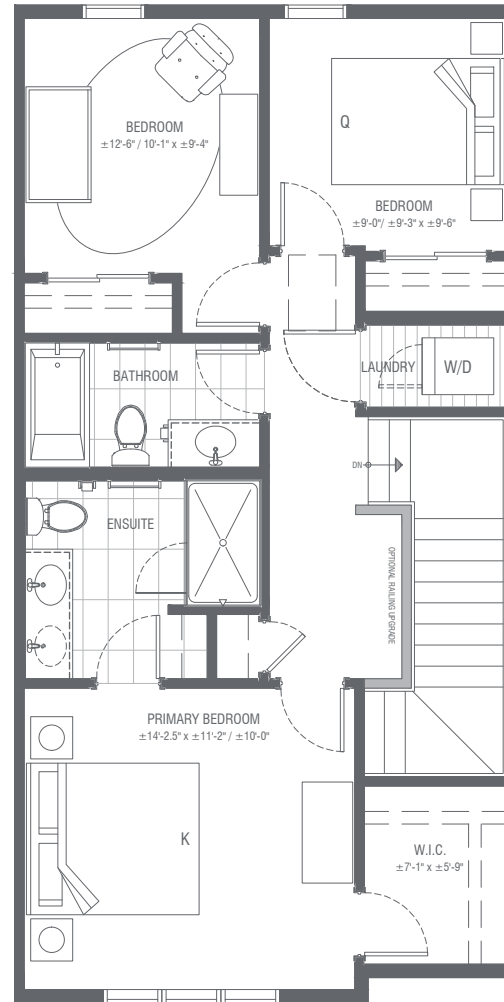
3 - 4 BEDROOM, 2.5 - 3.5 BATH  
DEVELOPED/UNDEVELOPED LOWER LEVEL  
Corner Home ±1,471 SQFT

Main - Central Kitchen



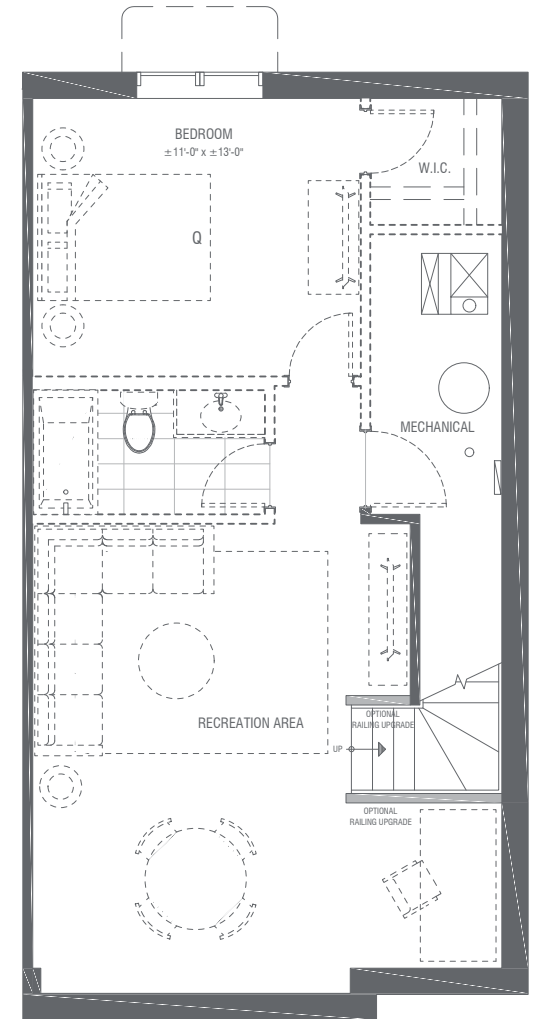
Interior ±689 SQFT

Upper - 3 Bedroom



Interior ±782 SQFT

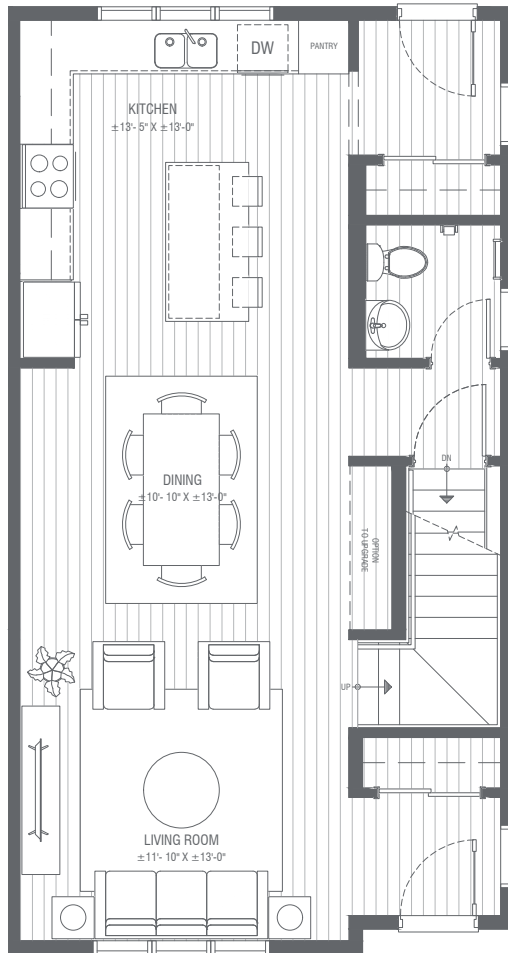
Lower - Undeveloped



Interior ±0 SQFT

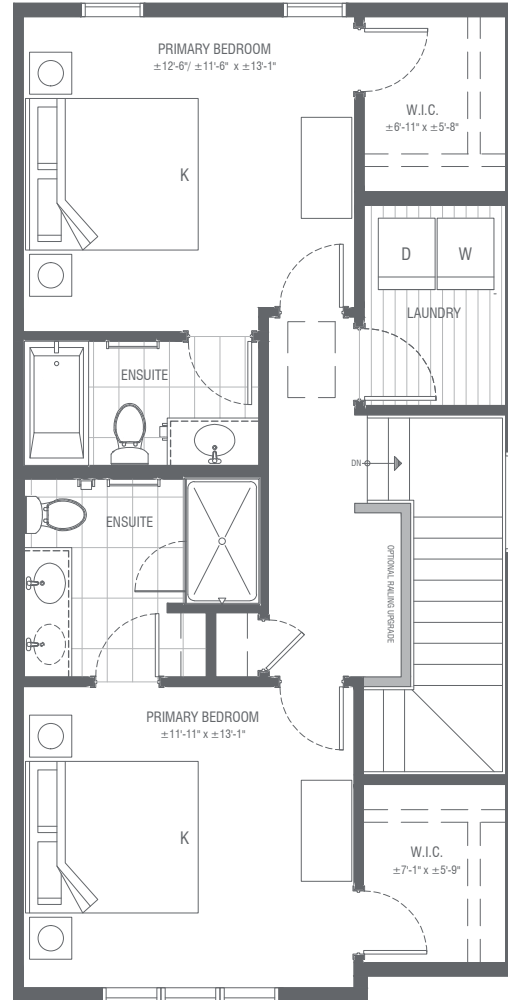
2 - 3 BEDROOM, 2.5 - 3.5 BATH  
DEVELOPED/UNDEVELOPED LOWER LEVEL  
Corner Home ±1,471 SQFT

**Main - Rear Kitchen**



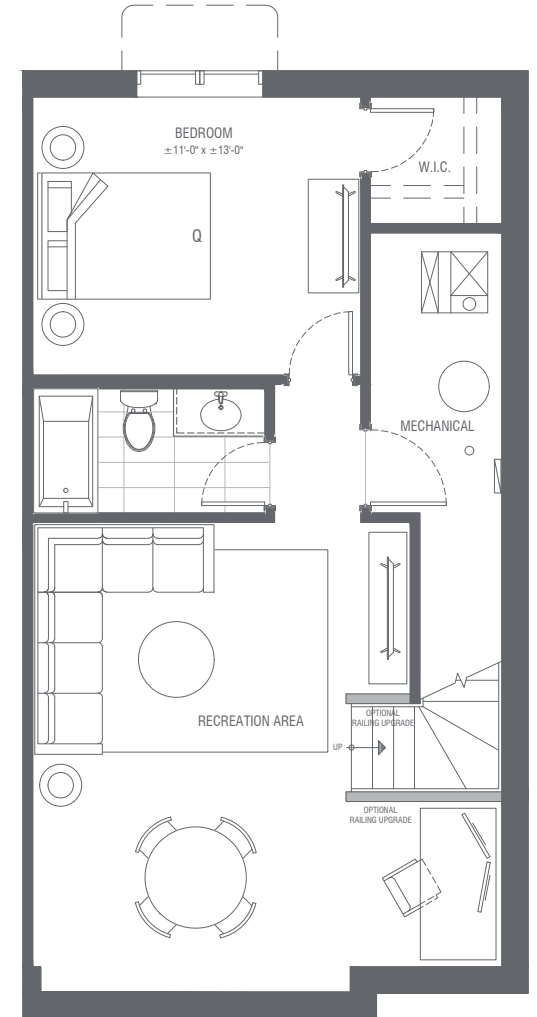
Interior ±689 SQFT

**Upper - 2 Bedroom**



Interior ±782 SQFT

**Lower - Developed**



Interior ±672 SQFT