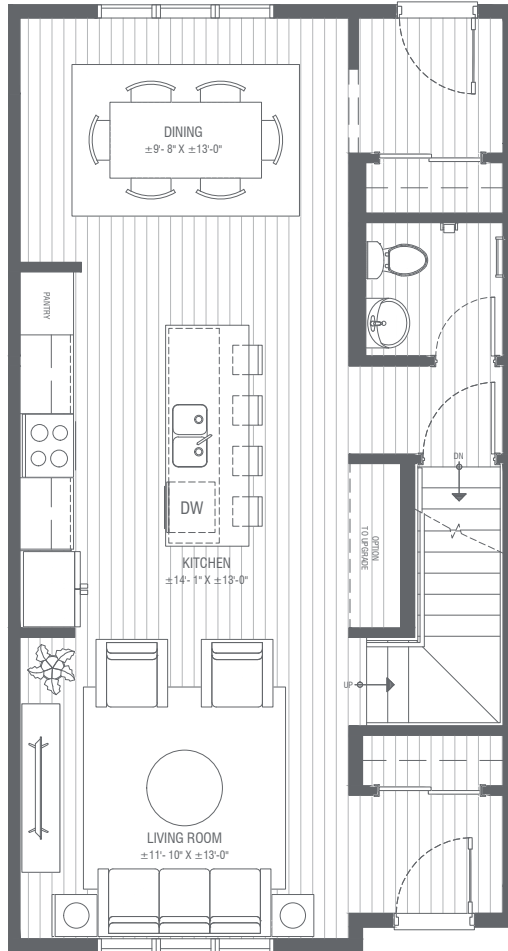


# Floorplan - A

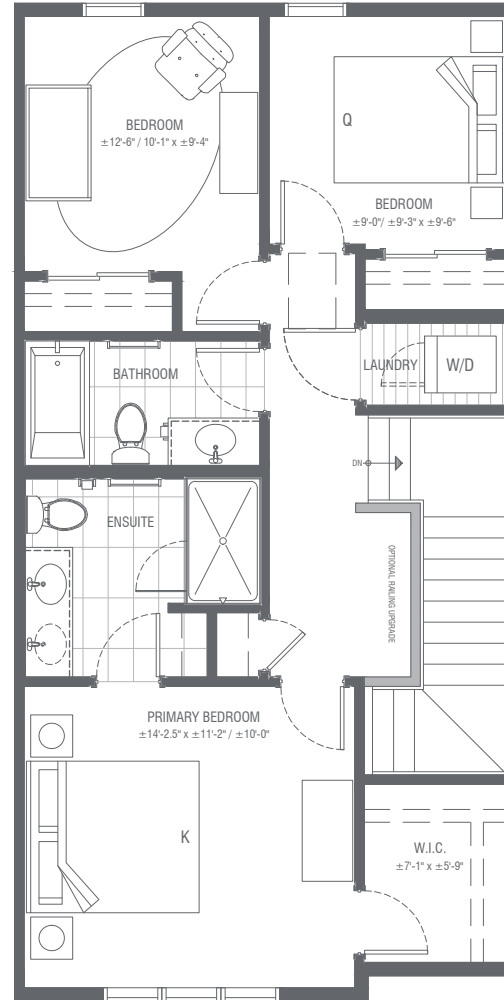
3 - 4 BEDROOM, 2.5 - 3.5 BATH  
DEVELOPED/UNDEVELOPED LOWER LEVEL  
Interior Home ±1,476 SQFT

Main - Central Kitchen



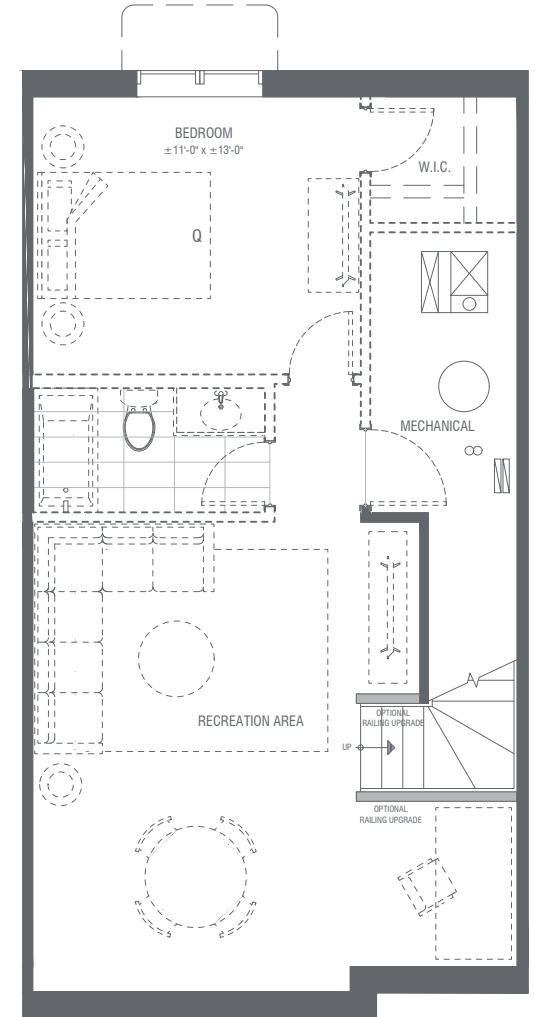
Interior ±693 SQFT

Upper - 3 Bedroom



Interior ±783 SQFT

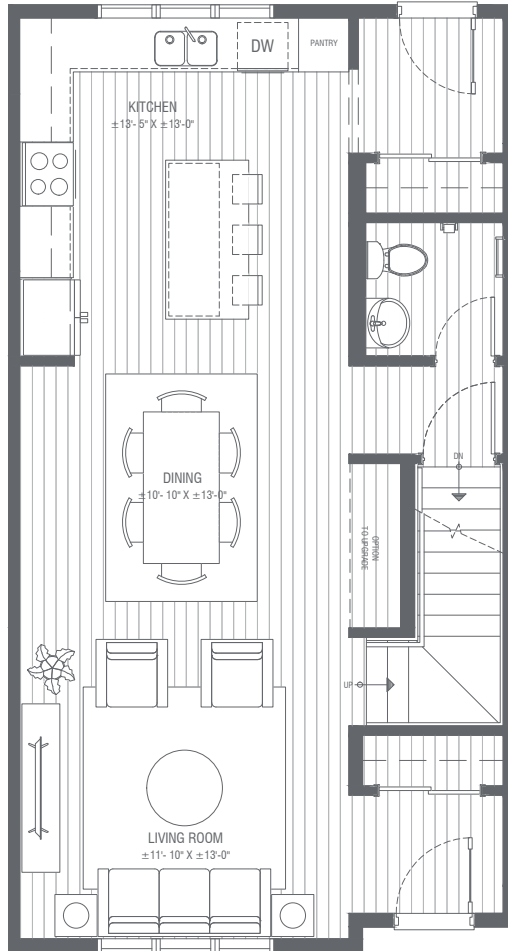
Lower - Undeveloped



Interior ±0 SQFT

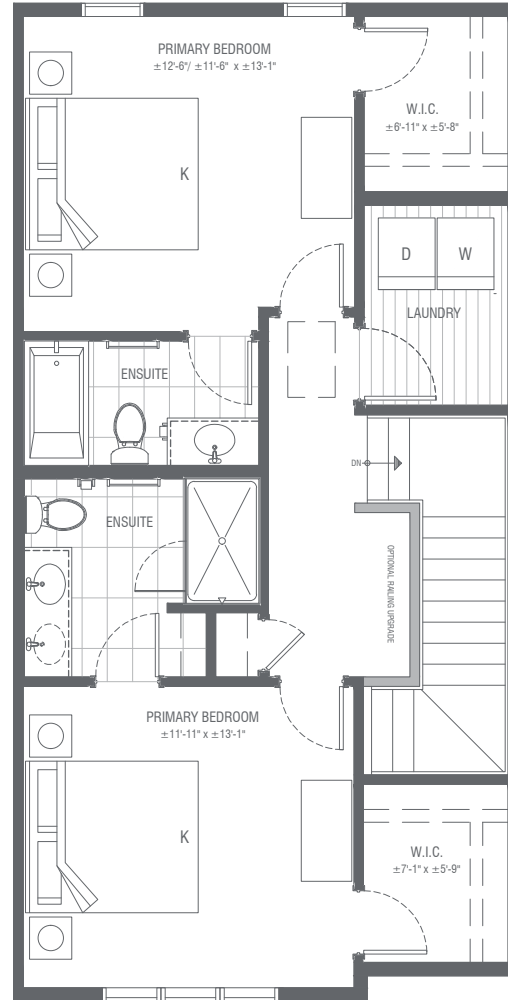
2 - 3 BEDROOM, 2.5 - 3.5 BATH  
DEVELOPED/UNDEVELOPED LOWER LEVEL  
Interior Home ±1,476 SQFT

**Main – Rear Kitchen**



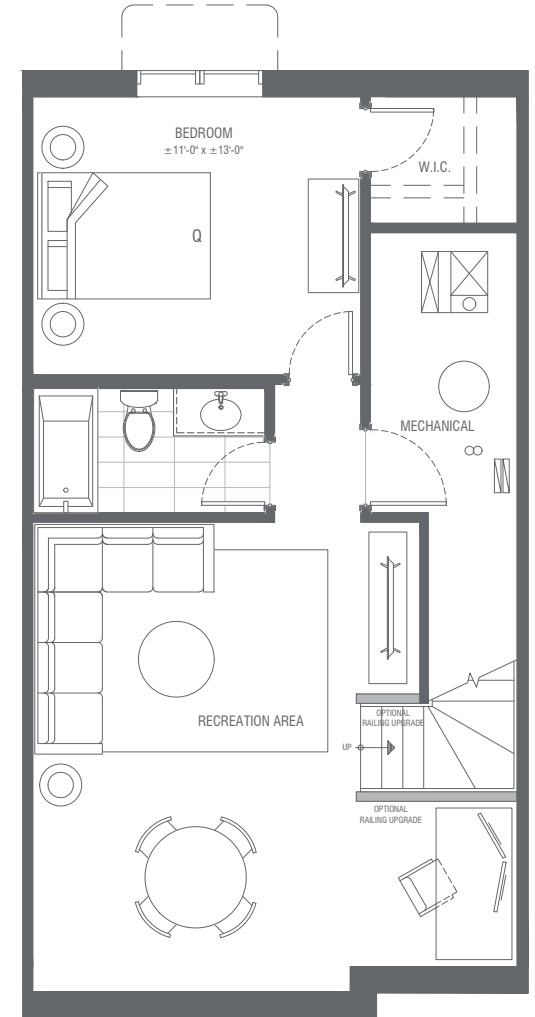
Interior ±693 SQFT

**Upper – 2 Bedroom**



Interior ±783 SQFT

**Lower – Developed**



Interior ±672 SQFT